

## Staithes

Bay Tree Cottage is located in the traditional old fishing village of Staithes which is in easy reach of Whitby, Sandsend, Runswick Bay and North Yorkshire Moors National Park. With an abundance of walks on beach or moor it is ideal for "mind blowing" days in some of Britain's most beautiful countryside and coastline.

Renowned for its traditional cottages and small "nooks and crannies", Staithes history goes back hundreds of years. Captain James Cook lived and worked in Staithes in a cottage just 20 feet away from the Cottage and locally there is trail following most of early life including Whitby where he famously sailed off on his exploratory travels.

Fishing and smuggling formed a greater part of the village history and today secret alleys and caves leading to the harbour are still found in process of renovation and modernisation taking place in the village. With a sympathetic National Park restriction in place all development is positive and in keeping with tradition - minimal flat roofs, no flats "stuck on house roofs" - Staithes is as traditional as it comes.

## Surrounding Area

The area around Staithes is beautiful, Margret Thatcher once said that the North Yorkshire Moors Constituency is the most beautiful in the country and as we live nearby we can surely agree it is one of the most breathtaking areas in the world. Winter and Summer alike the North Yorkshire Moors and Coastline have enchanted visitors from all over the world. Locally there are an abundance of activities to keep adults and children excited.

- North Yorkshire Moors Railway
- Runswick Bay
- Whitby
- Robin Hood's Bay
- Scarborough

The Welcome pack at the cottage contains a full range of information.

## Booking Details

Visit [www.baytreecottage-staithes.co.uk](http://www.baytreecottage-staithes.co.uk) for information on Booking Details and Prices. Well behaved dogs welcome. (£15 per dog)



"Every time we encounter Bay Tree cottage the interior improves but the homely environment is priceless"

*Derek and Stephen*

[www.baytreecottage-staithes.co.uk](http://www.baytreecottage-staithes.co.uk)

Graham and Nicky Wall  
Castledene, Castleton, North Yorkshire YO21 2ER

Tel. # 44 (0)1287 660108  
evenings and weekends. (answer phone service)

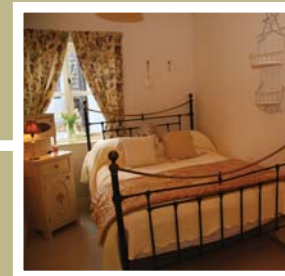
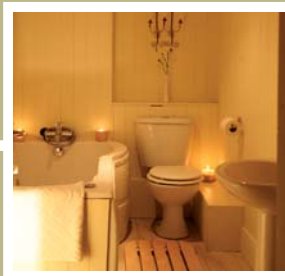
[info@baytreecottage-staithes.co.uk](mailto:info@baytreecottage-staithes.co.uk)  
[www.baytreecottage-staithes.co.uk](http://www.baytreecottage-staithes.co.uk)

# BAY TREE COTTAGE

Sliptop, Staithes



Bay Tree Cottage is a spacious yet cozy retreat in the centre of the old town. The cottage is an ideal location for a week long break, weekend summer retreat, or winter bolt hole. 2 minutes from the beach, with the North Yorkshire Moors National Park within easy reach, Bay Tree Cottage is ideal for Seaside and Countryside lovers alike. Whether it is bird watching, fossil collecting walking or just escape, Bay Tree Cottage will stick in your mind and you will return.



**Kitchen/Living Area** - has all the facilities of a well stocked modern home with the added advantage of a brand new double range oven. Combined with a cosy settee and TV the Kitchen/Living area is equipped with brand new Shaker style kitchen units, washer machine, dryer, fridge freezer, double range cooker, toaster and cooking equipment. Everything you can think of available down to a potato ricer.

There is a large 3 seat, loose cushion sofa with TV and DVD player. A selection of DVD's are supplied for bored children or adults that want to cuddle up. Table that seats 6 - 10 if required as dinner parties are regular at the cottage.

Outside dining area offers an ideal yet comfortable outside dining opportunity on a good day is wind free, ideal secluded suntrap for Gin and Tonic or a nice glass of Wine. BBQ supplied with Charcoal and lighters.

Crab lines and fishing rods and basic tackle is supplied for all those Dad's and Grandad's that tell tales of "when I was a lad, I used to go fishing". The proof is in the catching they say and the Harbour will produce small edible fish and crabs for the recreation of youth. There is an abundance of shell fish and rock pools at low tide providing a kids paradise of exploration and if they dare winkling. Be warned the children and generally adults always come home soaked!

Bay Tree Cottage has 3 double bedrooms, sleeping 6 in comfort with a spacious modern shower room on the first floor. Heated by a log burning stove which feeds all radiators, the cottage has a separate, permanent hot water supply. Stairs leading to the first floor, Brand new bathroom with electric power shower toilet and hand basin - we also provide a few essentials to replace the ones you are bound to of forgotten!

**Double Bedroom 1** - brand new double bed and mattress/bedding. Large fitted wardrobes - views over the pan-tile roof tops. Bed side lamps make it an ideal room for adults with room to leave cases unpacked!

**Double Bedroom 2** - brand new double bed and mattress/ bedding. Bedside lamps make this a small but comfortable room for 2 adults or children. Views over the roof tops of the old town and mount cliff to the rear of the cottage.

**The Master Bedroom 3** - Newly refurbished with Brand new wrought iron bed. This room has outstanding views over the old harbour, beach and cliff coastline heading south toward whitby. Equipped with en-suite bathroom with jacuzzi bath and shower this room is an apartment in itself and an ideal suite for adults to avoid the madnes of the rest of the house. The suite has piped music from a CD player along with flat screen TV and DVD player. Sitting area with comfortable sofa and chair, this room offers ideal seclusion to take in a novel, movie or romantic lazy day in bed. If you book the cottage for a group - get your name on this one quick!



"If this is heaven, can't wait to get there!!"

*Norma and Mick*